



WELCOME

to THS Sixth Form

**The best school or college in
Teesside for student progress.**

Department for Education, 2025



Teesside High School
Education as it should be

WELCOME

As Head of Sixth Form at Teesside High School, I am proud to lead such an exciting, inspiring and independent part of our school.

Sixth Form is an academic and personal adventure and we want to provide every student with the environment, opportunities and support needed to achieve their aspirations and propel them to their dream destination, whether that be in higher education, apprenticeships or the world of work.

With over 15 years of teaching and pastoral experience, I understand the challenges and excitement that come with the transition from GCSEs to post-16 study. This is a pivotal time for students to develop the academic rigour and personal resilience that future universities and employers value so highly.

Alongside exceptional teaching, our Sixth Form experience includes dedicated support for university and job applications, interview preparation and personal development. Your wellbeing is my priority; it is my job to deliver first class pastoral, wellbeing and mental health support, ensuring your time at THS Sixth Form is a happy and fulfilling experience.

Life outside of your studies does not stop there. THS Sixth Form hosts regular mentoring sessions, Sixth Form socials, 'Life Beyond THS' industry professional talks and exceptional enrichment and sporting opportunities.

If you are considering joining us, I encourage you to visit and discover what makes our Sixth Form so unique. Ranked in the top 2% of schools nationally for student progress and the leading A-level provider in Teesside – our results speak for themselves. Come and experience the THS Difference.

MRS K FURNESS



30

**A-level and
BTEC courses**



**Purpose built Sixth
Form facilities,
including on-site gym**

TOP 2%

**A-level providers
nationally for
student progress**
(Department for Education, 2025)



**An afternoon dedicated
to enrichment, including
watersports at Tees
Barrage and fitness
training at David
Lloyd Teesside**

100%

**Pass rate across
ALL subjects**



**Industry Week;
organised career
placements for
every student**

TOP 15%

**Inspected schools
nationally**
(ISI, 2025)



**A weekly shuttle
bus to Yarm or Teesside
Park for lunch**

4-6

**Average
class size**

LIFE IN THE SIXTH FORM

The Sixth Form years represent an exciting and transformative stage in every student's life. It's a time of academic growth, increased independence and personal development – when resilience, ambition and individuality truly begin to flourish.



At Teesside High School Sixth Form, we place equal importance on academic success and exceptional pastoral care. When you join our Sixth Form, you're not just gaining access to excellent teaching, you are entering a community that will support, challenge and nurture you at every step. Our aim is that every student leaves us not only with outstanding results but as a confident, well-rounded young adult, ready for the opportunities and challenges that lie ahead.

AS A SIXTH FORM STUDENT, YOU'LL BE ENCOURAGED TO PUSH BEYOND YOUR COMFORT ZONE, DEVELOP YOUR VOICE AND EMBRACE THE LEADERSHIP ROLE YOU NATURALLY TAKE ON AT THE TOP OF OUR SCHOOL COMMUNITY.

Each day includes more than just academic lessons – you will also have time built in for self-directed study, wider reading and planning your next steps, whether that's preparing university applications, researching apprenticeships or exploring career pathways.

Outside the classroom, you will enjoy access to a wide range of clubs and enrichment opportunities, paddleboarding at Tees Barrage, playing pickleball at David Lloyd Teesside or rock climbing at Rock Antics, to name but a few, as well as the chance to relax and socialise with friends. Lunchtimes offer flexibility and freedom. You are welcome to enjoy the comfort and convenience of the on-site Dining Hall, or take advantage of the Sixth Form privilege to head off-site and explore nearby shops and cafés. You will be given the chance to thrive in your outdoor education pursuits through Duke of Edinburgh and residential trips could take you to New York, Norway, Krakow, Iceland and more; seeing the world with your friends and truly differentiating yourself with the skills you acquire along the way.





GUIDANCE, SUPPORT AND PROGRESSION

With this level of focused, individualised support, our students leave Sixth Form not only with excellent results, but with the confidence and skills required to succeed.

A rather unique feature of Teesside High School is the friendly and welcoming atmosphere where the Sixth Form, in particular, is a small, family-like unit.

In addition to our unrivalled pastoral care, regular form time and PSHE lessons offer the opportunity for students to learn and discuss relevant topics including mental health and emotional intelligence, as well as develop essential study skills such as evaluative writing and referencing.

Progression support at THS Sixth Form is truly outstanding. From the very start of Year 12, we take a highly personalised approach to help every student realise their ambitions.

Through regular learning conversations with Form Tutors and teaching staff, students receive tailored advice, guidance and encouragement. These check-ins focus not only on academic progress, but also on personal development and long-term goals.

Our experienced Form Tutors play a central role in supporting each student's journey, offering one-to-one guidance on applications, interviews and next steps. Whether you are aiming for Oxbridge, a degree in medicine, or a creative industry apprenticeship, we ensure you have the right preparation, support and opportunity at every stage.

You can expect assistance with your personal statement and CV, specialist mentoring for competitive courses, UCAS and apprenticeship guidance, careers talks and mock interviews and access to our 'Life Beyond THS' speaker series. In the summer term of Year 12, you will also have the chance to gain a unique insight into your chosen career through a fantastic Industry Week 5-day work experience placement.



YOUR PROGRAMME OF STUDY

In recent years, post-16 qualifications have become increasingly rigorous and demand the very highest level of independent study.

You will choose three subjects to study at Level 3/A-level, from over 30 offered. Your timetable will be made up of a mix of academic lessons and private self-study time, where you can take advantage of wonderful facilities in the Sixth Form to further your research and reading and complete additional study.

Outside of A-level and BTEC studies, we have found the Extended Project Qualification (EPQ), equivalent to an AS-level and highly regarded by universities and employers alike, to be a very popular choice as a fourth subject for high-flying students. Our EPQ results are consistently excellent and often prove useful in securing particularly competitive university places.



COURSES



ART, CRAFT AND DESIGN AQA

Art enhances fine motor skills, hand-eye coordination, problem solving skills, lateral thinking, complex analysis and critical thinking. No matter what career you choose, those who can arrange, present and display material in a way that is aesthetically pleasing have an advantage. Art makes us look at things anew, appreciate beauty, embrace diversity; it broadens our cultural horizons and develops our personal resources.

What does the course consist of?

In Art, Craft and Design, students will be expected to work within two or more areas from Fine Art (drawing, painting, mixed media, sculpture, printmaking), Textile Design (fashion design, fashion textiles, costume design, printed and dyed fabrics, wallpaper, interior design, constructed textiles, art textiles), 3D Design (sculpture, exhibition design, design for theatre, television and film, interior design,

environmental design, architectural design, jewellery/body ornament) or Photography (portraiture, landscape photography, still life photography, documentary photography, photojournalism, fashion photography, experimental imagery, multimedia, photographic installation, moving image (video, film, animation)).

How is the course assessed?

Through a Personal Study (60%) and Externally Set Assignment (40%).



BIOLOGY AQA

Biology involves the study of a wide range of exciting topics, ranging from molecular biology to the study of ecosystems and microorganisms to mammoths. Biologists work in the fields of cell biology, medicine, food production, genetic engineering and ecology, and the work they do is vital to us all. Biology at Teesside High School aims to provide a sound, up-to-date understanding of these and other important areas of the subject.

What does the course consist of?

Topics studied in Year 12 include: biological molecules, cells, organisms exchange substances with their environment, genetic information, variation and relationships between organisms.

In Year 13 students will study energy transfers with organisms, genetics, populations, evolution and ecosystems and the control of gene expression.

How is the course assessed?

By examination. Practical techniques and analysis of data are also an integral part of the course and are examined in the terminal examinations. There are 12 compulsory practicals, during which students must show competency of a range of techniques in order to be awarded a pass in their practical skills.



APPLIED SCIENCE^{EDEXCEL}

The Applied Science BTEC course covers a wide range of interesting topics coupled with lots of opportunities to develop your practical skills. The course is designed for those that are interested in applying their scientific practical skills in industrial situations.

What does this course consist of?

Four compulsory topics and one optional topic. The compulsory topics include Unit 1: Principles and Applications of Biology, Unit 2: Principles and Applications of Chemistry, Unit 3: Principles and Applications of Physics and Unit 4: Practical Scientific Procedures and Techniques.

The content of this qualification has been developed in consultation with academics to ensure that it supports progression to higher education.

How is the course assessed?

Students will be assessed in a variety of different ways which is in keeping with BTEC Applied courses. Units 1, 2 and 3 will be externally marked written examinations in Biology, Chemistry and Physics, based on content learnt within these units. This will be followed up by two units, one of which is more practical based, the other is an extended research project, these will be internally marked.



BUSINESS^{AQA}

Business life is full of risks and Business students experience those from the safety of the classroom. Whether it is marketing a new confectionery bar or saving an ailing shoe factory, the same problem-solving skills are applied. Developing these skills is central to the A-level course.

What does this course consist of?

The new AS level Business begins with an introduction to the world of business, focusing on entrepreneurs, business planning and objectives before progressing to consider issues associated with forms of business and stakeholders. The course then examines the management of the main functional areas, specifically Marketing, Finance, Operations and Human Resources (People). The A-level consolidates the AS programme of study and considers ethics, business and society, the external environment, business strategy, change and managing business culture.

How is the course assessed?

At the end of Year 12, students take two AS examinations, both 1 hour 45 minutes. The full A-level is assessed at the end of Year 13 by three papers, each two hours long.



CHEMISTRY^{OCR}

If you like logical problems, Chemistry is for you. If you want to know what makes up the world around you, you are a natural chemist. It is like seeing with new eyes all that is before you; within your food, on product labels, in cosmetics, in fuels, in the atmosphere, in the chemistry of life, and in the chemistry of the newest products.

What does this course consist of?

AS Chemistry shows you in more detail how atoms bond, allowing you fully to comprehend group and carbon chemistry and you will learn to make calculations relating to reactions. AS builds on your GCSE Chemistry knowledge, placing a much greater emphasis on understanding and application. A wide variety of topics are covered including Atoms and Equations, Bonding and Structure, Acids, Redox, The Periodic Table, Chemical Calculations, Alkanes and Alkenes, Alcohols, Haloalkanes and Analysis, Energy Calculations, Rates of Reaction and Equilibrium.

How is the course assessed?

Practical skills will be developed throughout the course. A number of experiments will be formally assessed and used to give a practical skills grade which will be recorded separately to the grade given from written examinations. There are also two written examinations for the AS qualification and three written examinations for the A-level qualification.



CLASSICAL CIVILISATION^{OCR}

This two year A-level course should appeal to anybody who enjoys reading and discussion in class. It goes well with other humanities, whilst also keeping options open for scientists. Classical Civilisation can offer you a stimulating course of study and can make you stand out as an exceptional student.

What does the course consist of?

At present in Year 12 we are studying the whole of Homer's epic The Odyssey and concepts of heroism, fantasy, magic and monsters. The second AS paper we also study is Greek theatre, its archaeology and stagecraft, but with a clear focus on reading, acting and discussing the dramas: Oedipus, the primal pattern of a man struggling against his destiny, The Bacchae, in which an uptight king disguises himself as a woman to spy on those running wild in the woods, with tragic consequences and a funny Greek play, the Frogs, about a voyage to the underworld.

In Year 13, we continue to consolidate our learning about epic poems and study Virgil's Aeneid, in comparison with Homer's Odyssey. The final component is Love and Relationships.

How is the course assessed?

By examination.



COMPUTER SCIENCE^{OCR}

Computer Science is the study of computation, information and automation spanning both the theoretical and applied. Through exposure to computer architectures, networking, data representation, cyber security and the impacts of technologies our students develop a deep level of understanding on how the digital world that surrounds them each day works.

What does the course consist of?

The study of: Computer Systems, Algorithms and Programming and the completion of a Programming Project.

How is the course assessed?

Examination and coursework.



CRIMINOLOGY^{WJEC}

Criminology is the interdisciplinary study of crime as both an individual and social phenomenon, with research on the origins and forms of crime, its causes and consequences and social and governmental reactions to it. Criminology is for students who have an active interest in a multitude of fields, and seek to develop a critical and focused mind. Criminology is also for students interested in acquiring an in-depth understanding of the complexities of criminal, delinquent and deviant behaviour, as well as society's reaction to crime.

What does the course consist of?

The study of the following units: Changing Awareness of Crime, Criminological Theories, Crime Scene to Courtroom and Crime and Punishment.

How is the course assessed?

The WJEC Level 3 Diploma in Criminology is assessed through a combination of two written examinations, set and marked by the examination board WJEC, and two centre-marked assignments.



DRAMA AND THEATRE STUDIES^{AQA}

Students choose to study Drama and Theatre for so many reasons; because they enjoy performing and exploring the experiences of other people; because they are considering a career that involves creativity; because they work well in a practical situation or because they wish to build a toolkit of transferable skills they can take into their future career.

What does the course consist of?

Drama and Theatre; a written examination in which students are assessed on their knowledge and understanding of how drama and theatre is developed and performed and on their ability to analyse and evaluate the live theatre work of others.

Creating Original Drama: This is a practical component in which students are assessed on their ability to create and develop ideas to communicate meaning as part

of the theatre making process making connections between dramatic theory and practice and apply theatrical skills to realise artistic intentions in live performance.

Making Theatre: a practical component where students explore and interpret three extracts, each taken from a different play.

How is the course assessed?

Through a mix of practical units and examination.



ECONOMICS^{EDEXCELA}

Why do Premier League footballers earn more than the Prime Minister? Why do all the goods in our shops appear to have been 'made in China'? Do rich nations gain anything by trading with poor countries? Economics tackles these sorts of questions by analysing how best to allocate scarce resources among unlimited wants. We study both Macro and Microeconomics at AS level and A-level. We frequently refer to current news stories to emphasise the importance of Economics and to illustrate that it is at the heart of all government policy and decision making. If you would like to understand what is going on in the world you live in – study Economics!

What does this course consist of?

The course is divided into four themes:

Theme 1: Introduction to markets and market failure (Microeconomics)

Theme 2: The UK economy – performance and policies (Macroeconomics)

Theme 3: Business behaviour and the labour market (Microeconomics)

Theme 4: A global perspective (Macroeconomics)

How is the course assessed?

By examination.



ENGLISH LANGUAGE^{AQA}

The A-level English Language course encourages you to develop your interest in English through learning about its structure, functions, developments and variations. You will be introduced to methods of understanding spoken and written language through a range of linguistic frameworks, learning new terminology for the analysis of texts.

What does the course consist of?

The course consists of the following areas of study: Textual variation and representation, Children's language development, Language diversity and change, Language discourses, Writing skills, Language Investigation and Original Writing.

How is the course assessed?

The A-level English Language course takes place over two years, at the end of which you will submit a coursework folder and sit two external examinations.



ENGLISH LITERATURE^{AQA}

Whatever your future plans might be for higher education and your career, an A-level in English Literature will always be advantageous. Every university course and profession will require you to possess competent skills of communication, both oral and written, and it is the development of these skills which lies at the heart of the English Literature AS and A-level course.

What does the course consist of?

The A-level English Literature course consists of the following areas of study:

- Love through the ages – in this unit you will study three texts: one poetry and one prose text, of which one must be written pre-1900, and one Shakespeare play. The examination will also include the comparison of two unseen poems.
- Texts in shared contexts – we currently follow Option B: Modern times: literature from 1945 onwards. In this unit you will study three texts: one prose, one poetry, and one drama, of which one must be written post-2000. The examination will also include an unseen prose extract.

- Non-exam assessment : Independent critical study: this unit is called Texts across time and is a comparative critical study of two texts, at least one of which has been written pre-1900. It is an extended essay of 2500 words plus an academic bibliography

How is the course assessed?

The A-level English Literature course takes place over two years at the end of which you will submit a coursework folder and sit two external examinations.



EXTENDED PROJECT QUALIFICATION^{AQA}

The Extended Project Qualification (EPQ) is a piece of independent work: either a 5000 word essay with a presentation, or an event with an accompanying report. At Teesside High School, we encourage students to consider undertaking this qualification in Year 12 or Year 13.

The EPQ has the same weighting as an AS level, and is highly valued by universities. Russell Group universities say that the EPQ helps young adults develop exactly the skills in research, organisation, self-motivation and academic presentation that will stand them in good stead as undergraduates.

This qualification also offers students the chance to study in depth a subject that is outside the curriculum; to pursue their own interests – in anything from equestrianism to games design, from apartheid to celebrity culture. If you are intending to read a subject at university which is not offered at school, such as Law or Veterinary Medicine, an EPQ on Habeas Corpus, profiling serial killers or Bovine Tuberculosis can demonstrate your interest in and dedication to your chosen field, making you stand out from the crowd in a highly competitive environment.

Students are appointed a specialist EPQ supervisor, a teacher who oversees the whole process, from working out a title together, meeting regularly to determine progress and teaching study skills such as the conventions of annotation and bibliography. Both the skills acquired and the qualification in itself will be of great value to students in their future lives, as undergraduates and professionals in the world of work.





FOOD SCIENCE AND NUTRITION^{WJEC}

An understanding of food science and nutrition is relevant to many industries and job roles. Care providers and nutritionists in hospitals use this knowledge, as do sports coaches and fitness instructors. Hotels and restaurants, food manufacturers and government agencies also use this understanding to develop menus, food products and policies that support healthy eating initiatives.

What does this course consist of?

Three units: Meeting Nutritional Needs of Specific Groups, Ensuring Food is Safe to Eat and either Experimenting to Solve Food Production Problems or Current Issues in Food Science and Nutrition.

How is the course assessed?

A mix of examination and practical assessment.



GEOGRAPHY^{AQA}

Geography helps students to understand the world in which they live. It links well with other subjects such as Science, Languages and other Humanities. Geography provokes and answers questions about natural and human environments. The subject provides an excellent means for investigating contemporary issues at both global and local scales, ranging from coastal management strategies to inner city urban rebranding. Through studying Geography you will also gain key skills such as communication skills, team work, problem solving as well as analytical and evaluative skills.

What does the course consist of?

The study of Physical geography: water and carbon cycles, coastal systems and landscapes and hazards.

Human geography: global systems and global governance, changing places and population and the environment and a Geography fieldwork investigation: students complete an individual investigation which must include data collected in the field.

How is this course assessed?

Through examination and coursework.



HEALTH AND SOCIAL CARE^{CAMBRIDGE}

This qualification is an alternative to A-level which provides students with an opportunity to focus upon areas which are essential to Health and Social Care and would be suitable for students considering a career in areas such as Childcare, Nursing, Paediatrics, Midwifery, Social Work, Teaching, Police or Probation.

What does the course consist of?

Topics include: Building Positive Relationships in Health and Social Care, Equality, Diversity and Rights, Health, Safety and Security and Anatomy and Physiology.

How is the course assessed?

This course will be particularly appealing for many students due to the combination of assessment styles which contribute towards the qualification. The combination of both internally assessed, portfolio work and examined content is becoming increasingly rare across qualifications but is often more popular with students than exclusively examined content.





HISTORY^{OCR}

Students taking History will be informed, provoked and entertained as our aim is not merely to narrate 'what happened', but to encourage students to see the subject as a creative analysis of the past. Class discussions are a central part of lessons, and in the more relaxed atmosphere of small groups, students learn to express their opinions with force. They discover that judgements and opinions are never accepted at face value – everything is challenged and tested against the evidence.

What does the course consist of?

The OCR Specification presents exciting opportunities which allow students to combine a study of topics from British, European and World History. These topics will include Tudor England during the reigns of Henry VII, Henry VIII, Queen Mary and Elizabeth I alongside a module on the Weimar Republic through to Nazi Germany and the divisions of Germany after WW2. The second part of the A-level is based on Civil Rights in the USA 1865-1992, exploring African Americans, Native Americans, Trade Unions and Women.

How is the course assessed?

By examination and coursework (20% of the full A-level).



LATIN^{OCR}

A-level Latin consists of the study of the literature, mythology and history of the Ancient Romans, in the language in which it was first written. Latin has obvious appeal to linguists, and makes up a good combination with their subject for historians, or those taking English Literature.

How is the course assessed?

In Year 12 we prepare for papers, one literature and one focused on language. In Year 13 the course follows a similar pattern. Allowing students to consolidate their linguistic knowledge, it allows a more in-depth study of authors world-shaping writers like Virgil and Cicero, as well as building an excellent working knowledge of the myths and history of this fascinating period.

How is the course assessed?

This two year A-level course is assessed through examination.



MATHEMATICS^{EDEXCEL}

Mathematics and Further Mathematics are versatile qualifications, well-respected by employers and are both facilitating subjects for entry to higher education. Careers for people with good mathematics skills and qualifications are not only well paid, but they are also often interesting and rewarding. People who have studied mathematics are in the fortunate position of having an excellent choice of career.

What does the course consist of?

For AS and A-level Mathematics you will study a range of Pure, Statistics and Mechanics topics such as advanced algebra, functions, geometry, trigonometry, vectors, calculus, series, exponentials, logarithms, numerical methods, statistical sampling, data representation and interpretation, probability, regression, correlation, statistical distributions, hypothesis testing, quantities and units, kinematics, forces and Newton's laws.

For AS and A-level Further Mathematics you will study topics from Core Pure, Further Pure and an option from Decision, Statistics and Mechanics.

How is the course assessed?

By examination.



MODERN LANGUAGES, FRENCH AND GERMAN^{AQA}

When you study Modern Languages for GCSE, you concentrate mainly on the vocabulary and language skills which will enable you to get around successfully as a tourist in Europe or as a visitor in a French or German-speaking family. At A-level you move out into a wider world, as it were, and study broader issues which concern young adults. Apart from being beneficial at a personal level, your A-level in Modern Foreign Languages can help with many career paths. For those who want to specialise in language, there is translation or teaching. Or maybe you want to work in the travel and tourism industry. But even as, say, an engineer or designer, being proficient in a language will give you broad career options.

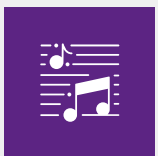
What does the course consist of?

The course has been designed to give you a profound understanding of your chosen language. Not only will you know more about the mechanics of the language – like grammar and vocabulary – but also about how people live and use language on a day-to-day basis. You will study social and technological change alongside highlights of

French or German-speaking artistic culture, including music and cinema, and you will learn about political engagement and explore the influence of the past on present-day French/German-speaking communities.

How is the course assessed?

This two year A-level course is assessed through a mix of written and oral examinations.



A-LEVEL MUSIC EDUQAS

The Eduqas A-level Music course has three components: Performing, Composing and Appraising (Listening.) Performing and Composing are much like the GCSE course but are required to be executed at a much higher level of difficulty and development.

What does the course consist of?

Compulsory areas of study include: The Western-Classical Tradition and Set Works, with optional units including Rock and Pop (1960-2000), Musical Theatre and Jazz (1920-1950).

How is this course assessed?

Through examination and assessment of performance and composition.



BTEC MUSIC PEARSON

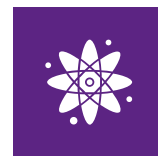
This exciting, modern course is equivalent to one full A-level. Designed to support progression to higher education as part of a balanced programme of study, the course gives a broad overview of the music industry, with a focus on performance, including musical skills development, research and professional practice.

What does the course consist of?

Students taking this qualification will study three mandatory units; Practical Music Theory and Harmony, Professional Practice in the Music Industry and Ensemble Music Performance. Each unit is based around a brief that would be common in the industry and allows students to experience realistic scenarios. Students also then choose one option unit from Composing Music or Solo Performance.

How is this course assessed?

58% of the course is externally assessed, with the remaining 42% being internally assessed. There are no examinations.



PHYSICS AQA

Are you curious about how the world works? Are you interested in shaping future discoveries, technologies and innovation? Do you want to develop a set of skills that will benefit you in any career? Do you want to boost your future earning potential? A-level Physics is an engaging, hands-on course with a strong emphasis on mathematical and problem solving skills. It is a highly valued and sought after qualification which is valued in a huge range of university courses and careers

What does this course consist of?

Studying topics such as Measurements and their Errors, Particles, EM Radiation and Quantum Phenomena, Waves, Mechanics, Materials and Electricity. Second year topics include: Further Mechanics, Thermal Physics, Gravitational and Electric Fields, Capacitors, Magnetic Fields, Nuclear Physics and Astrophysics.

How is this course assessed?

By written examination. Throughout the two year course students are also required to complete a minimum of 12 set practicals. If completed satisfactorily, students receive 'Practical Endorsement' at the end of their second year of study.



PRODUCT DESIGN AQA

Product Design gives you the opportunity to stretch the imagination, problem solve and test boundaries. It enables you to build skills and professional attributes which are transferable to a range of jobs. Working to a client's brief, collecting and analysing data/research, costings and testing, independent study, time management and business related processes.

What does the course consist of?

Theory topics included: Technical principles, Materials and applications (timbers, metals, textiles, paper, boards and polymers), Inclusive design, Product development, Ergonomics/anthropometrics, manufacturing processes, CAD/CAM, Health and Safety. Further, designing and making principles,

design theory, history of design, how cultural and technological improvements develop design, mathematics in Product Design.

How is the course assessed?

Through a non examined assessment (a written or digital portfolio of design work) and an external examination.



PSYCHOLOGY AQA

Do you often watch other people and try to work out the reason behind their behaviour? Have you experienced times in your own life when you have acted or said something in a way which you would not normally do and wondered why? Psychology is the scientific study of human and animal behaviour and mental processes. Studying Psychology gives students an excellent grounding in the skills of analysis and evaluation, essential skills for a student wishing to take an undergraduate degree at university.

What does the course consist of?

Studying Introductory Topics in Psychology, Psychology in Context and Issues and Opinions in Psychology.

How is this course assessed?

By examination.



PHYSICAL EDUCATION AQA

For any pupil with a genuine interest in sport and a good practical background, A-level PE would be an ideal subject choice. There is a natural progression from GCSE PE, although it is not a prerequisite.

What does the course consist of?

Studying topics such as applied anatomy and physiology, skill acquisition, sport and society, exercise physiology and biomechanics, sport psychology, sport and society and technology in sport.

How is this course assessed?

This is an academic course with the vast majority of lessons based in the classroom. Practical assessment is on one activity and could be a school-based sport or an activity pursued in the pupil's own time which would be assessed internally, students would be responsible for collecting and uploading the video evidence required. It is highly recommended that students are playing regular club level sports outside of school to achieve the highest possible grade.



BTEC SPORT PEARSON

This course provides a broad basis of study for the sport sector. It is designed to equip you with the knowledge, understanding and practical skills required for successful employment in the sport and recreation industries either directly or via study at a higher level.

What does this course consist of?

For this course there are three mandatory units: Anatomy and Physiology, Fitness Training and Programming for Health, Sport and Wellbeing and Professional Development in the Sports Industry.

How is the course assessed?

The course is assessed through a combination of one externally marked written examination (Anatomy and Physiology), one externally marked set task (Fitness Training and Programming for Health, Sport and Wellbeing) and two internally marked assignments for the remaining units.



POLITICS EDEXCEL

Everyone should study Politics – all members of society should have a better understanding of the general rules under which they live. For these rules to be effective, as many people as possible should actively participate in making them, upholding them and maybe, changing them. This is what is meant by 'active citizenship'. A healthy society is a society in which many people participate in political activity and do so with insight and understanding.

How is the course assessed?

A study of UK politics (political participation and core political ideas), UK government (the constitution, parliament and Prime Minister and non-core political ideas) and Comparative Politics (The US Constitution and federalism, US Congress, US Presidency, US Supreme Court and civil rights, democracy and participation, comparative theories).

How is this course assessed?

By examination.



RELIGIOUS STUDIES AQA

Why study Religious Studies?

Fascinating and enlightening, A-level Religious Studies can be an excellent subject choice. Not only will students develop a deeper knowledge and understanding of world religions, philosophy and ethics but students will also gain many valuable transferable skills along the way. The A-level syllabus combines the in-depth study of the Philosophy of Religion and Ethics with the study of a major world religion [Christianity] and the development of thought within it.

What does the course consist of?

Studying two components: Philosophy of Religion & Ethics and Study of Religion & Dialogues.

How is it assessed?

By examination.



Teesside High School
Education as it should be

www.teessidehigh.co.uk

