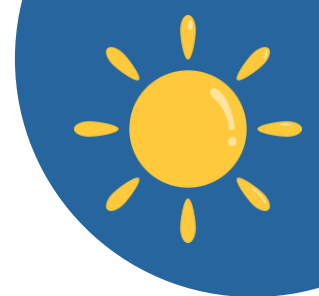


Big Adventures Holiday Camp

Monday 20 July - Friday 7 August 2026



Arrival Procedure

Children should arrive between 8.00am and 8.30am. Upon arrival please report to the school Reception where a member of staff will welcome the children.

Collection Procedure

Each morning you will be asked to select a collection time. On school based days these are either 4.00pm, 4.30pm or 5.00pm. On trip days the options are 4.30pm or 5.00pm. At your chosen time, your child will be dismissed from the school Reception. If the collecting adult is unknown to the staff they will be required to supply your password to ensure a safe collection.

Lunch and Snacks

Children are required to bring a packed lunch, snacks and a water bottle each day in a small backpack. Please ensure these are all nut free. Please note fizzy drinks and energy drinks are not allowed. Grapes should be cut length ways for health and safety reasons and glass containers should be avoided.

Clothing

Children should come suitably dressed in home clothes. They will need a waterproof coat each day. Younger children should also have spare clothes in their bag in case of any accidents. For trip days children should bring everything, including lunch, in a single backpack which they can carry and come suitably dressed to enjoy outdoor activities.

Electronic Devices and Personal Possessions

Electronic devices including mobile phones and tablets as well as soft toys are not permitted at Holiday Camp. Please note trips and activities are subject to change.



Timetable

Monday 20 July - Friday 24 July 2026



Monday 20 July - Let's go fly a kite!

Our summer holiday camp will get off to a flying start with this Mary Poppins themed day, which will see us designing and flying our own kites, drawing with chalks, and dancing like penguins.

Tuesday 21 July - Newham Grange Farm

We will visit Newham Grange Farm for the day to visit the farm animals and discovery barn (smaller petting animals) and to explore the woodland walk, imaginary play town and adventure play zone. Children may bring up to £5 in a named envelope for the gift shop.

Wednesday 22 July - Forest School and Sports

The first of our Forest School sessions for Holiday Camp this summer will be led by Miss Hopkins, our dedicated Forest School Leader. Our attendees will also take part in a range of sporting activities.

Thursday 23 July - Space Explorers

Inspired by Artemis II's trip around the moon, we will spend the day imagining what space travel might be like in the future, where we would want to visit, and what we might find there.



Friday 24 July - Science Spectacular

We will be joined by the Science Boffins for a spectacular scientific show. Afterwards, we will have a go at conducting our own scientific experiments.



Teesside High School
Education as it should be

Timetable

Monday 27 July - Friday 31 July 2026



Monday 27 July - Circus Skills

Our day will begin with a show by Splats Entertainment showcasing juggling, plate spinning and balancing, followed by a workshop involving an active, fun and magical set of challenges.



Tuesday 28 July - Ready, Steady, Cook

We will prepare a range of treats and dishes that you can easily recreate at home, including fruit kebabs, pitta bread pizzas and decorated biscuits.



Wednesday 29 July - Forest School and Sports

The second of our Forest School sessions for Holiday Camp this summer will be led by Miss Hopkins, our dedicated Forest School Leader. Our attendees will also take part in a range of sporting activities.

Thursday 30 July - Whitby Marine Discovery Centre

We will visit Whitby Marine Discovery Centre to see over thirty species of native marine life and learn about our amazing seas. Children may bring up to £5 in a named envelope to spend in the gift shop. We will then visit Pannett Park to explore its trails in nature.

Friday 31 July - Dino Day

A day dedicated to dinosaurs will see us explore how we discovered everything we know about these amazing creatures with activities inspired by dinosaur fossils and skeletons.



Teesside High School
Education as it should be



Timetable

Monday 3 August - Friday 7 August 2026



Monday 3 August - Staycation Safari

During our staycation safari we will complete activities inspired by traditional safari animals as well as taking part in a safari survey of birds and beasts throughout our extensive grounds.



Tuesday 4 August - Magic and More

We invite all witches, wizards and magical mischief makers to join us for a day of magic wands, potion making and heroic quests. We will also be joined by magician Graeme Shaw who will leave us in awe.

Wednesday 5 August - Saltburn Beach

We will enjoy a day at Saltburn beach where we will build sandcastle and paddle in the sea. With this in mind, please consider sending a second set of clothes just in case. Children may bring up to £5 in a named envelope to purchase an ice cream as well as their own buckets and spades.



Thursday 6 August - Forest School and Sports

Our final Forest School session for Holiday Camp this summer will be led by Miss Hopkins, our dedicated Forest School Leader. Our attendees will also take part in a range of sporting activities.

Friday 7 August - Holiday Camp's Got Talent

We will celebrate the final day with party games and our annual talent show. Children may bring nut-free sweet treats to share with their friends.



Teesside High School
Education as it should be

